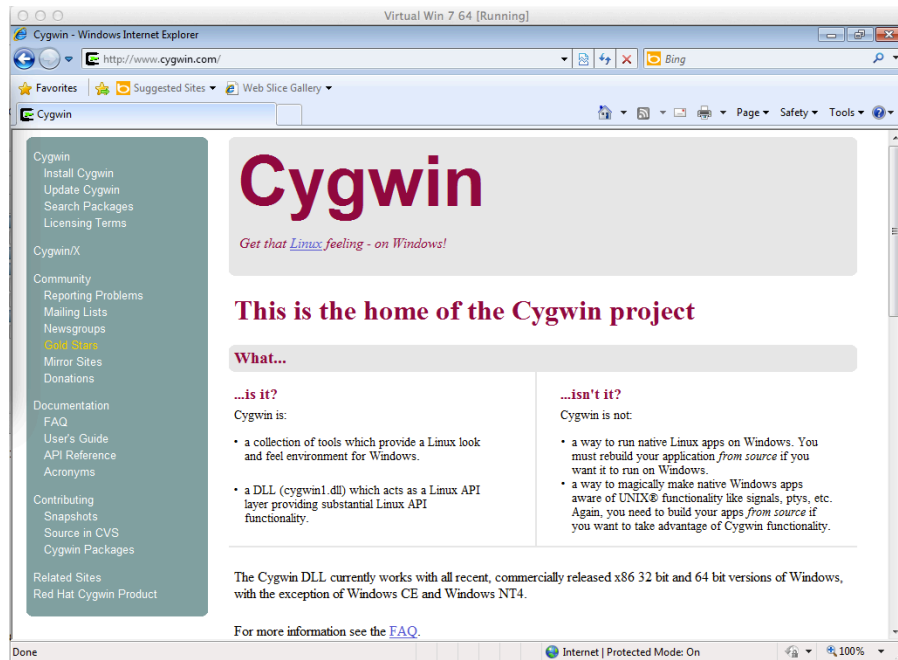
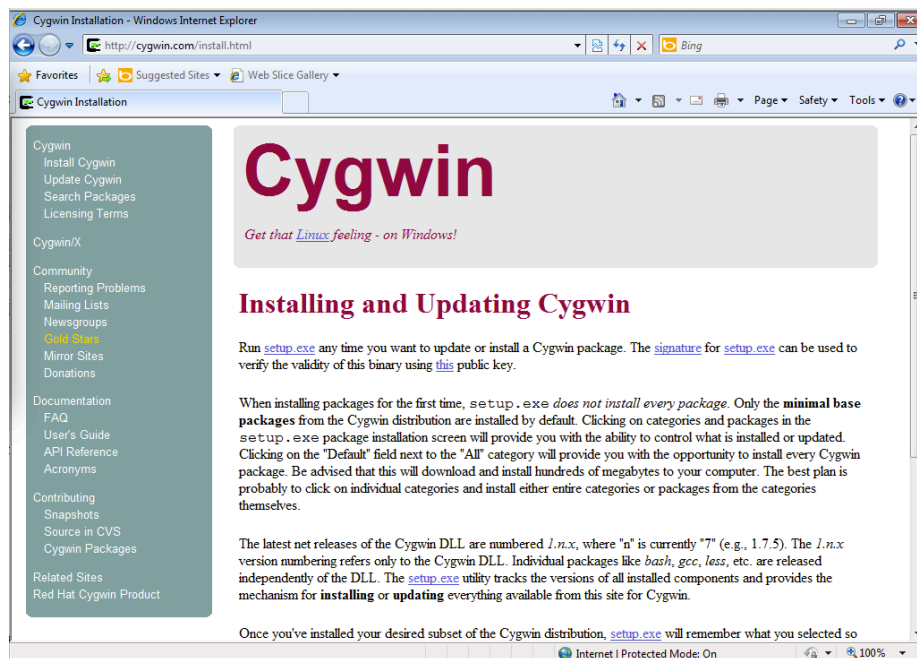


Installing Octave on Cygwin

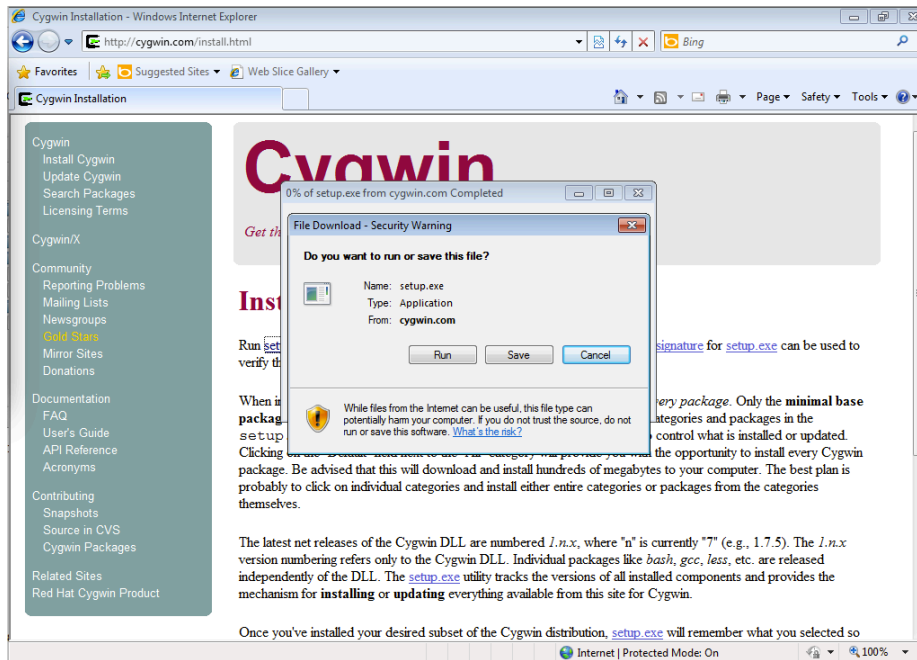
First, go to www.cygwin.com



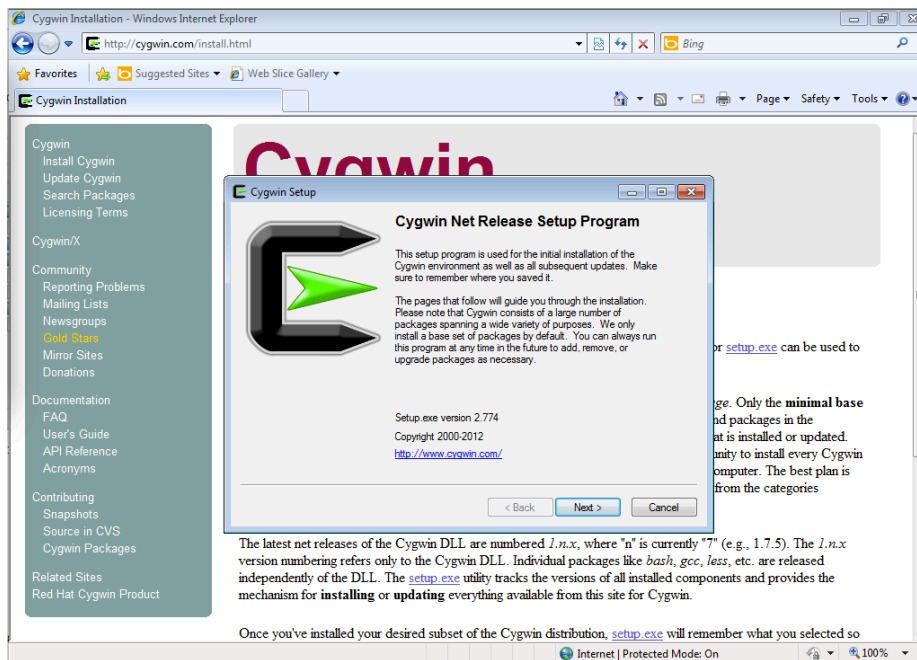
Click the Install Cygwin link on the upper left hand side of the page.



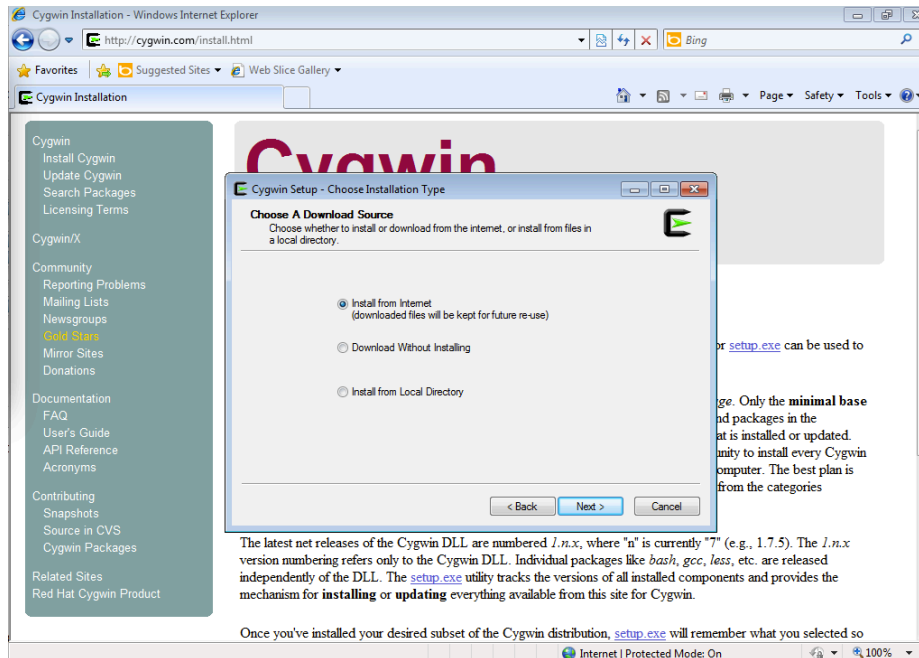
Click the setup.exe link just below the red "Installing and Updating Cygwin" heading.



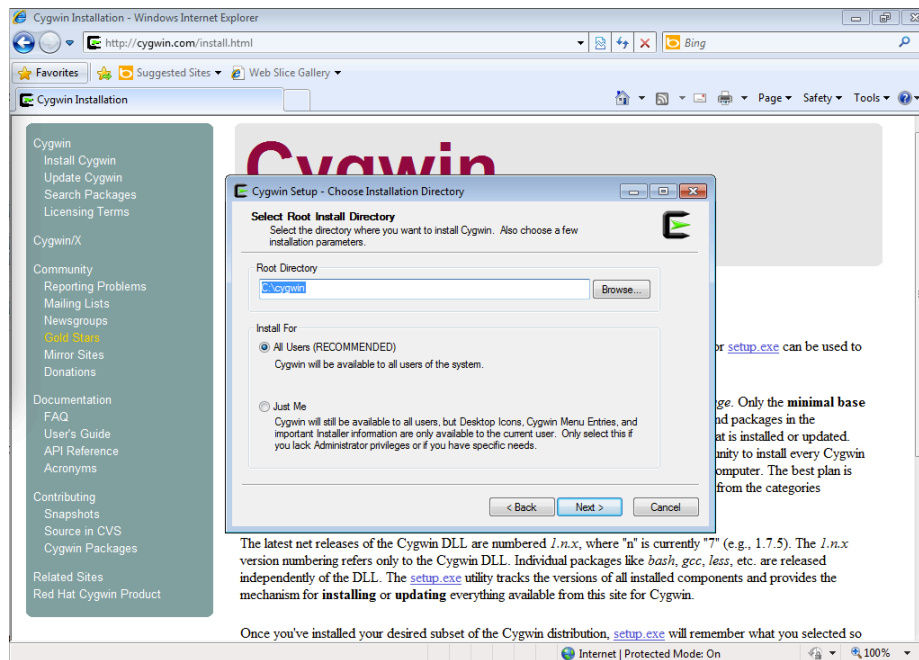
Save and then run setup.exe. Be sure to remember where you put the file.



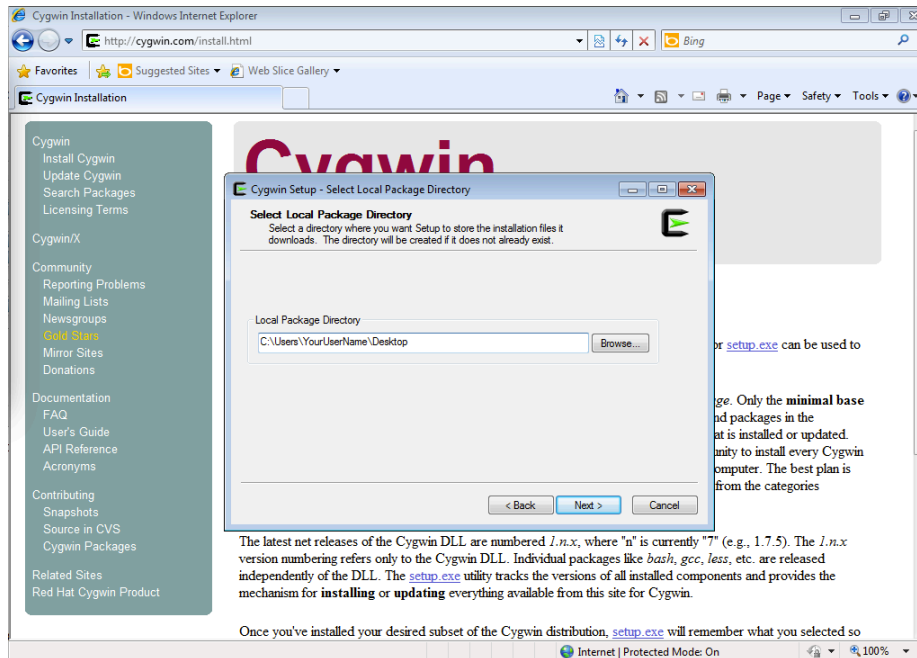
Run setup.exe, then, click next.



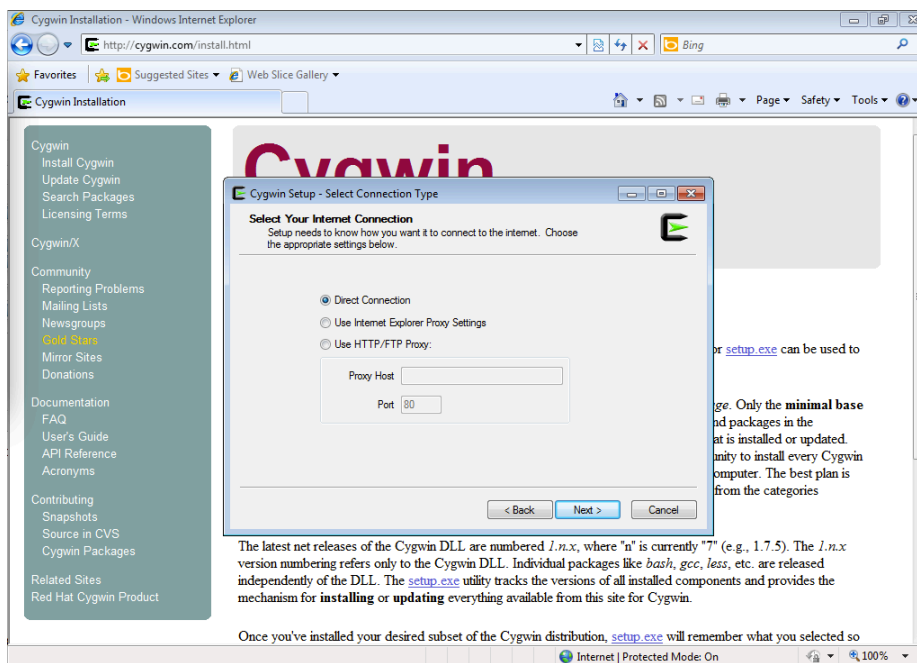
Select Install from Internet, then, click next.



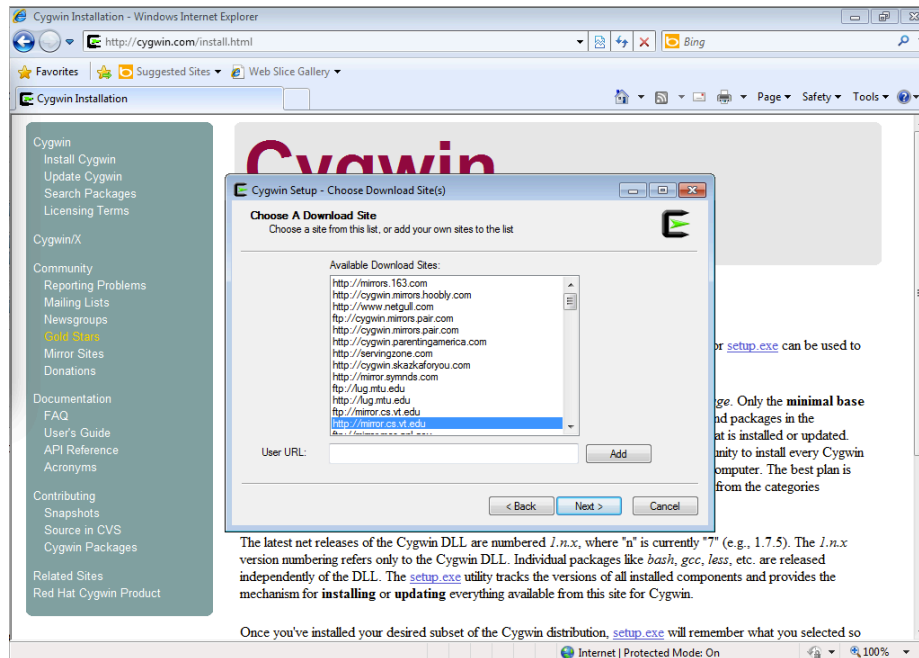
Use the default C:\cygwin for all users as the root directory, then, click next.



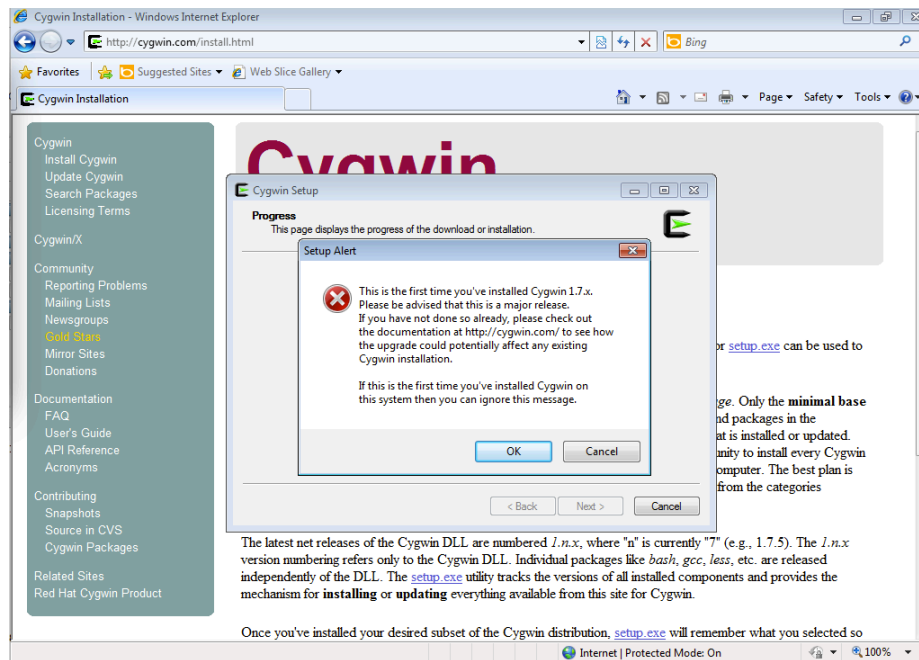
Choose a directory to use as the local package directory (you do not need to remember this).



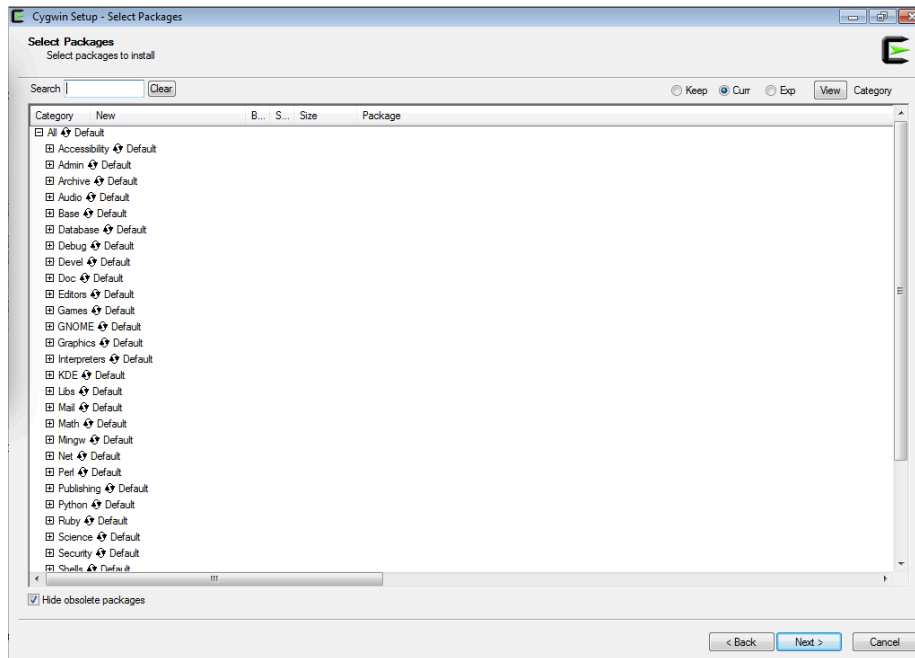
Use a direct Internet connection.



Select a download site. The university sites may be more reliable.



Click ok on the setup alert. If you have a previous version of Cygwin, you may need to read the documentation.

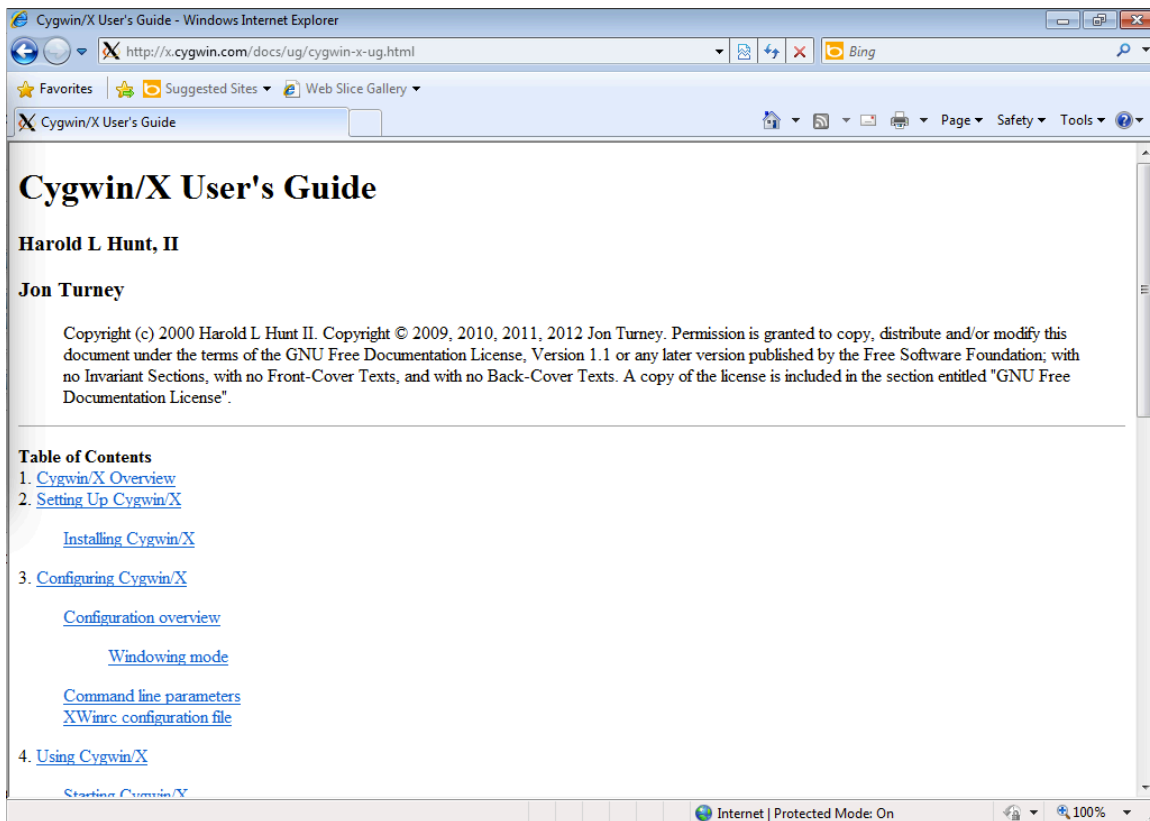


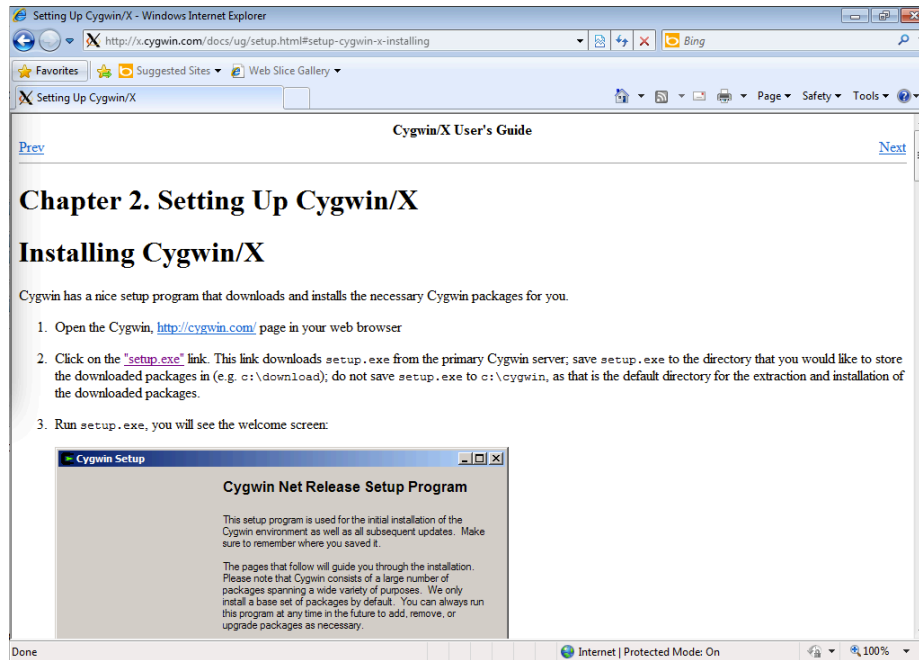
Now you should be on the package selection page within the Cygwin Setup. STOP!
You should go to <http://x.cygwin.com> first. Then, click on the User's Guide.



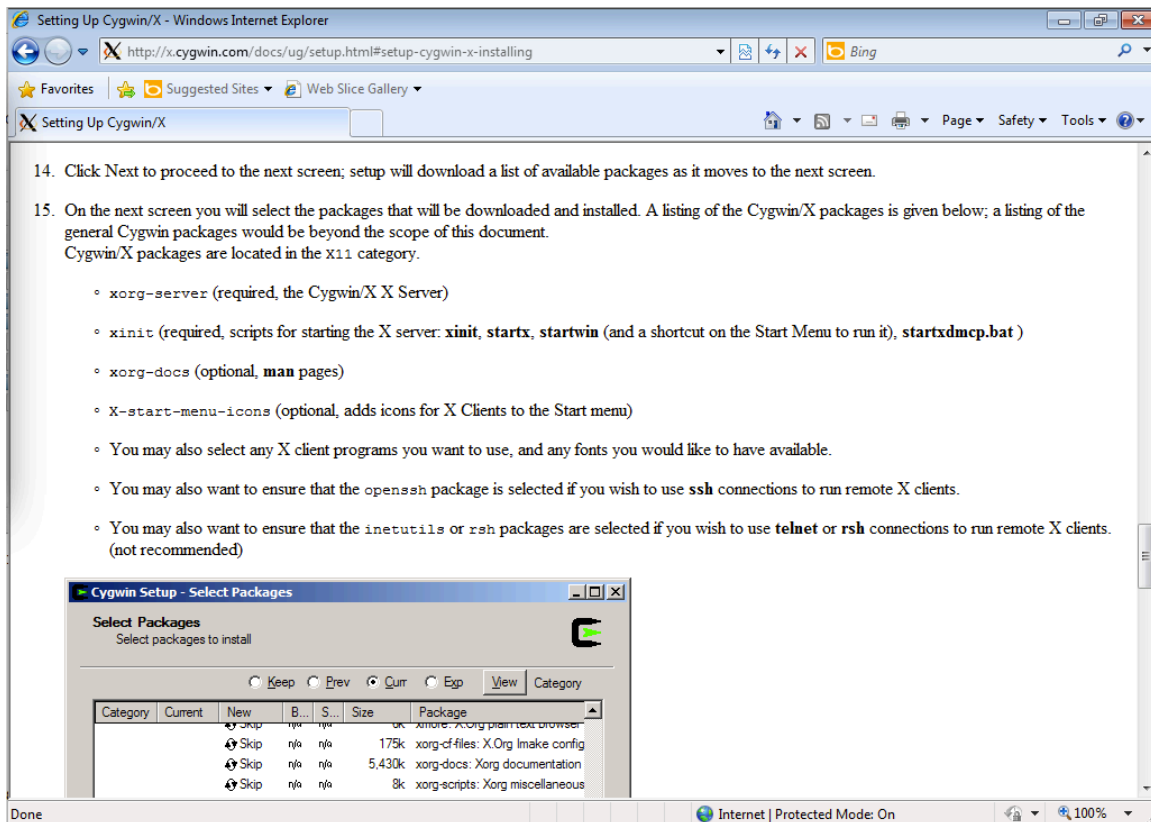


Go to the html version of the user guide. Then click the “Setting Up Cygwin/X” link.





Scroll down to items 14 and 15 of Chapter 2. These list the required packages to run Cygwin/X. You need Cygwin/X to run octave properly.



The following pictures show the packages you will need to run Cygwin/X, Octave, various text editors such as Nano, Emacs, and Vi, and a C compiler called gcc.

Use the search text box in the upper left hand corner to find these packages. Initially, they will be hidden under headings such as X11. You must click the plus button near the heading to open the list of software.

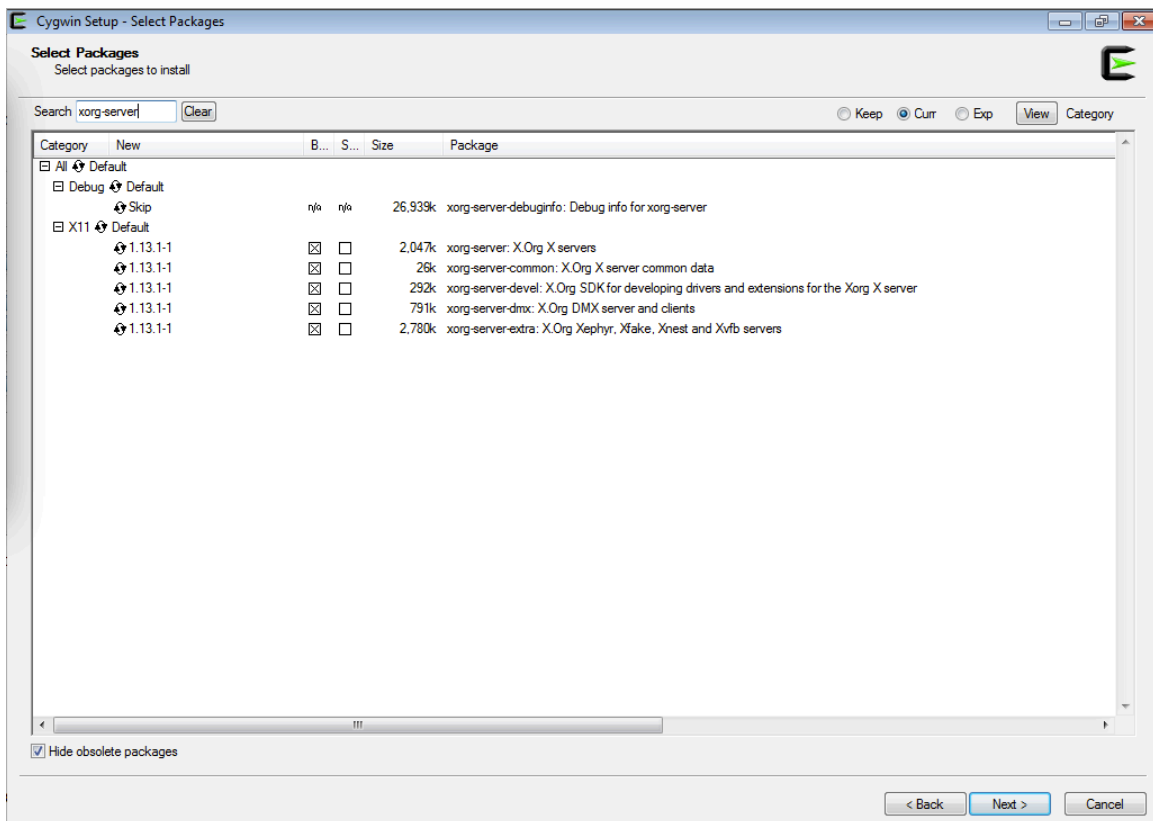
Next, there will be a column containing the word skip across from many of the packages from which you may select. Click skip once for each package. The word skip will change to a version number such as 1.13.1-1.

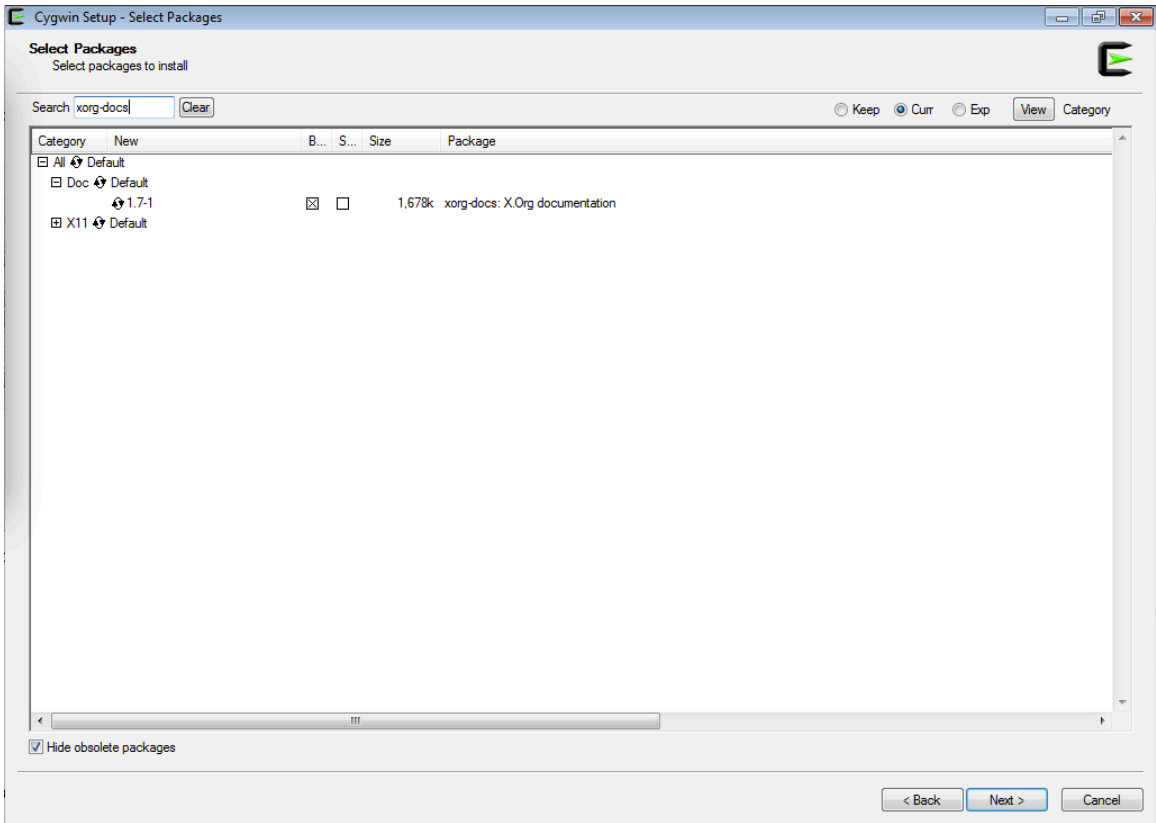
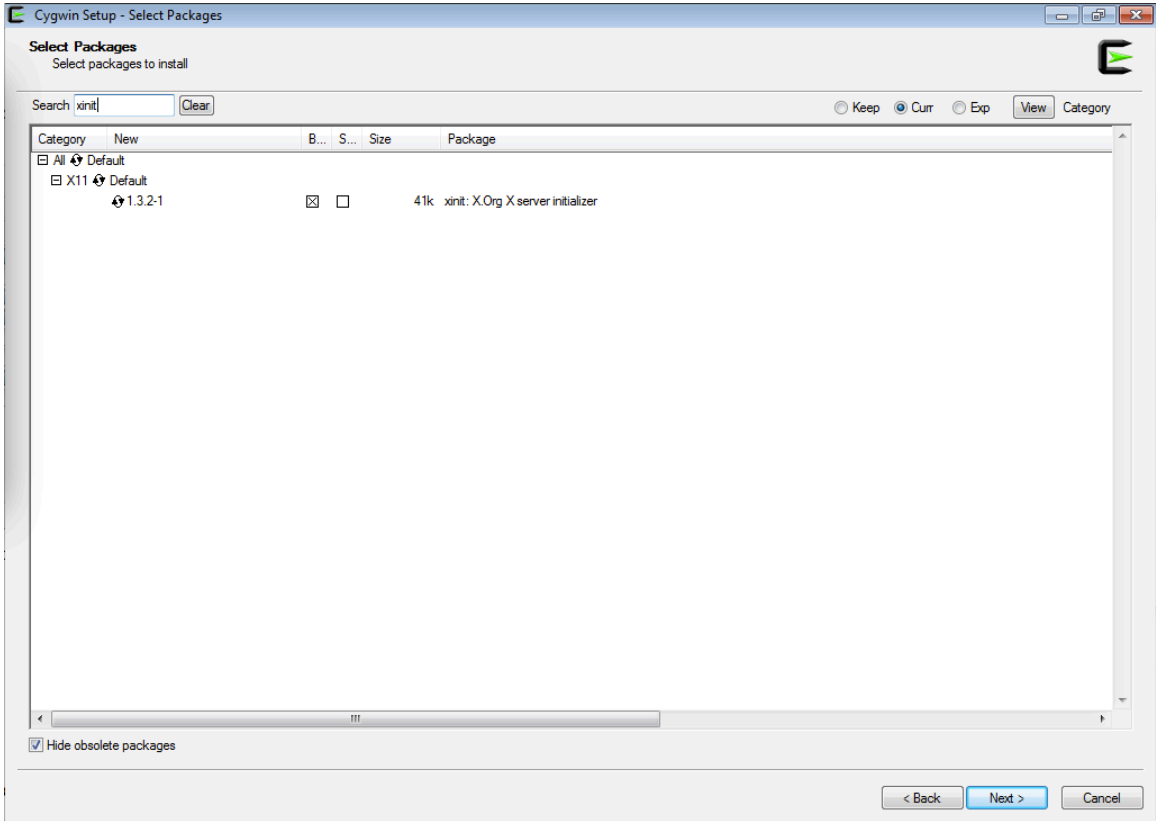
Once you see a version number, you have selected a package.

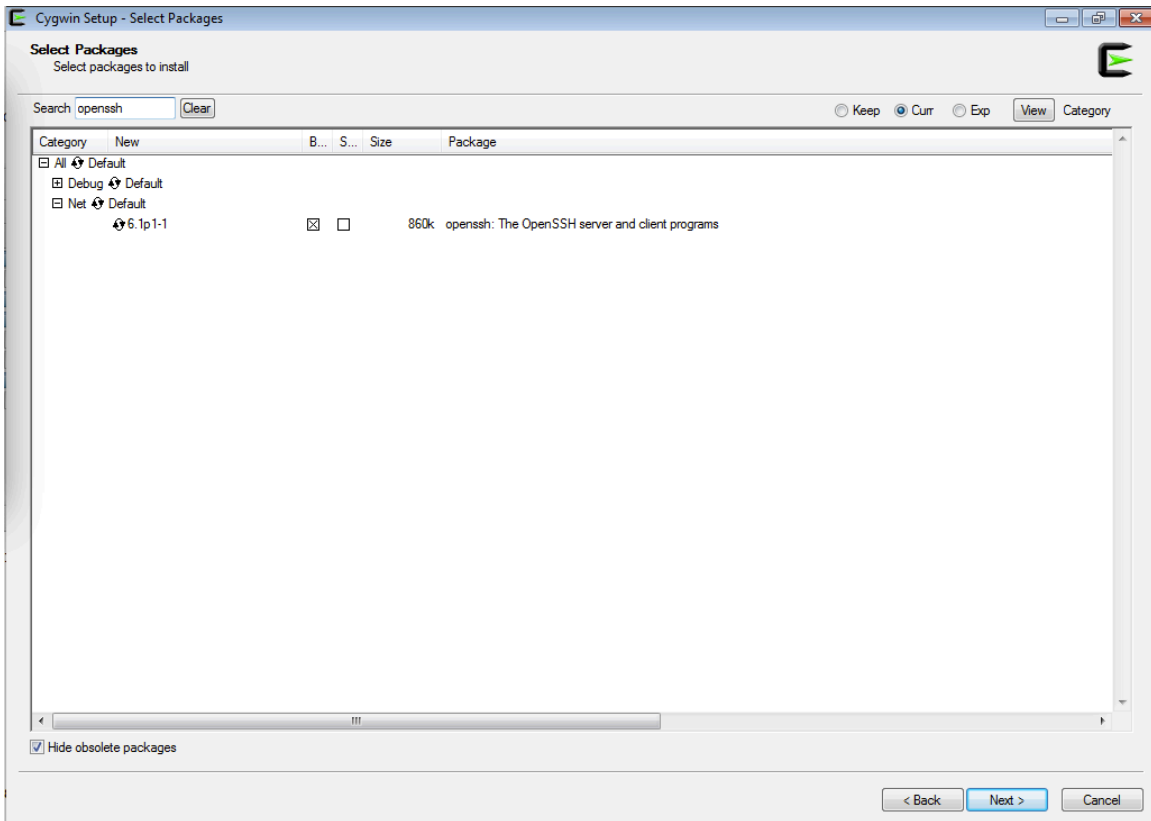
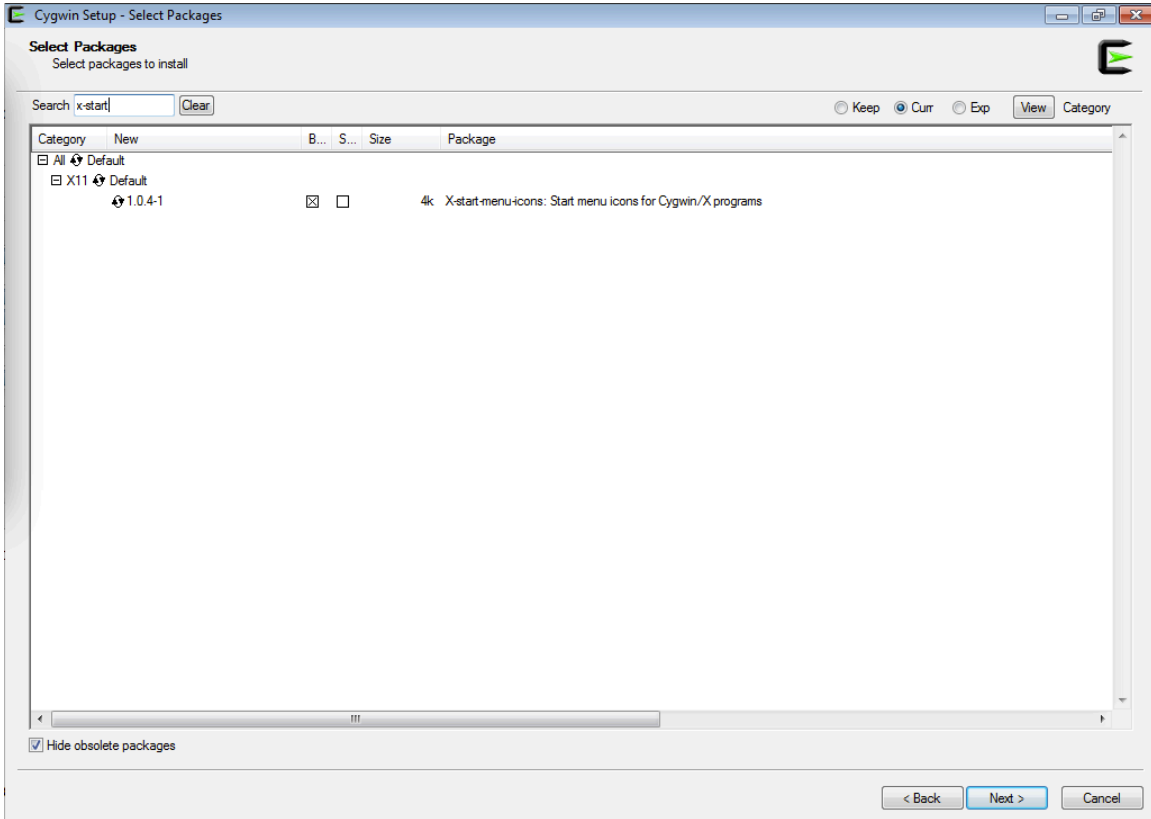
DON'T CLICK NEXT YET!!!

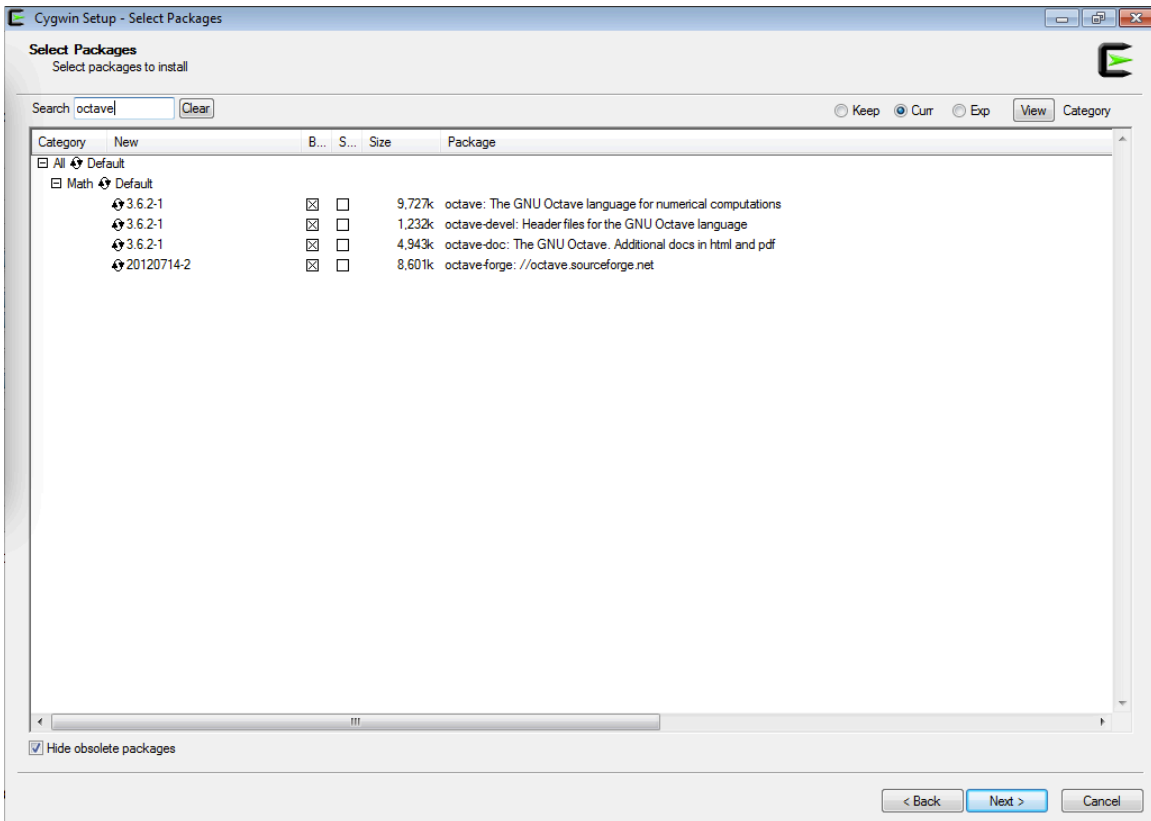
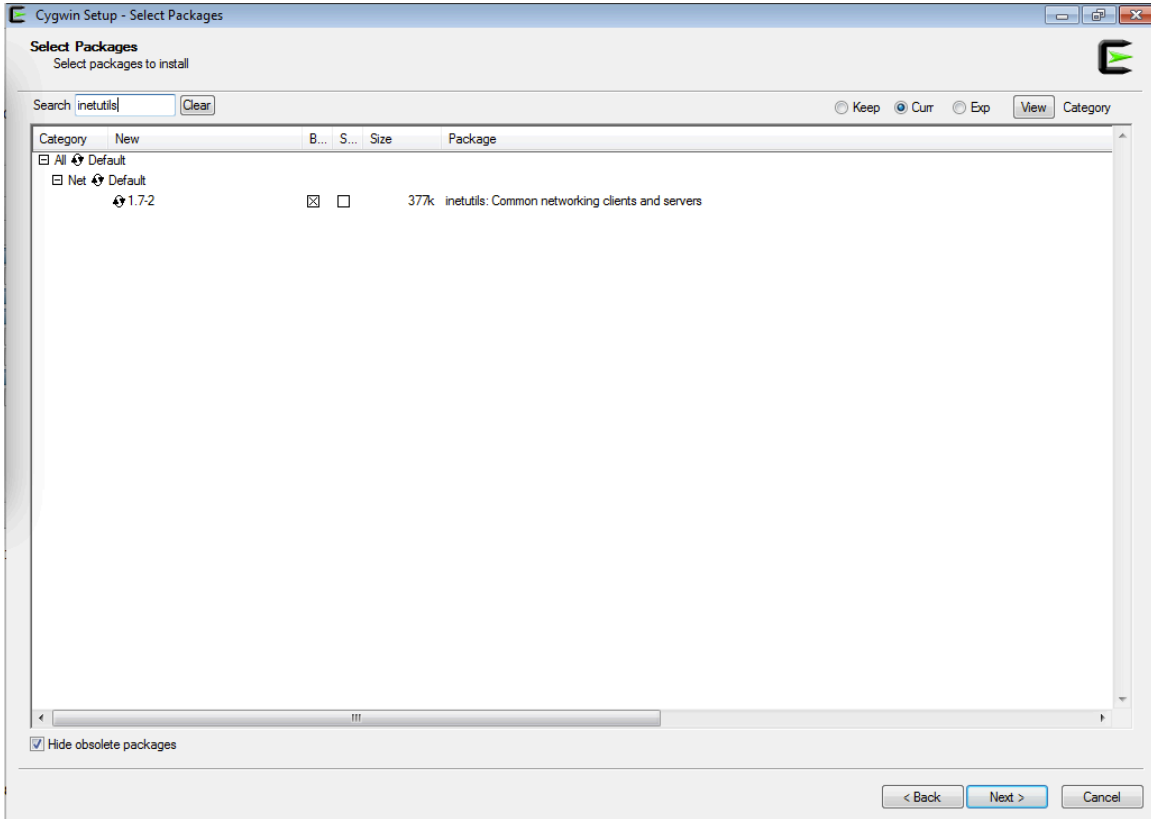
After you select the packages you need, type in the keyword referring to the next package you need. Repeat these steps until you have selected all the packages you need. Then, you can click next!

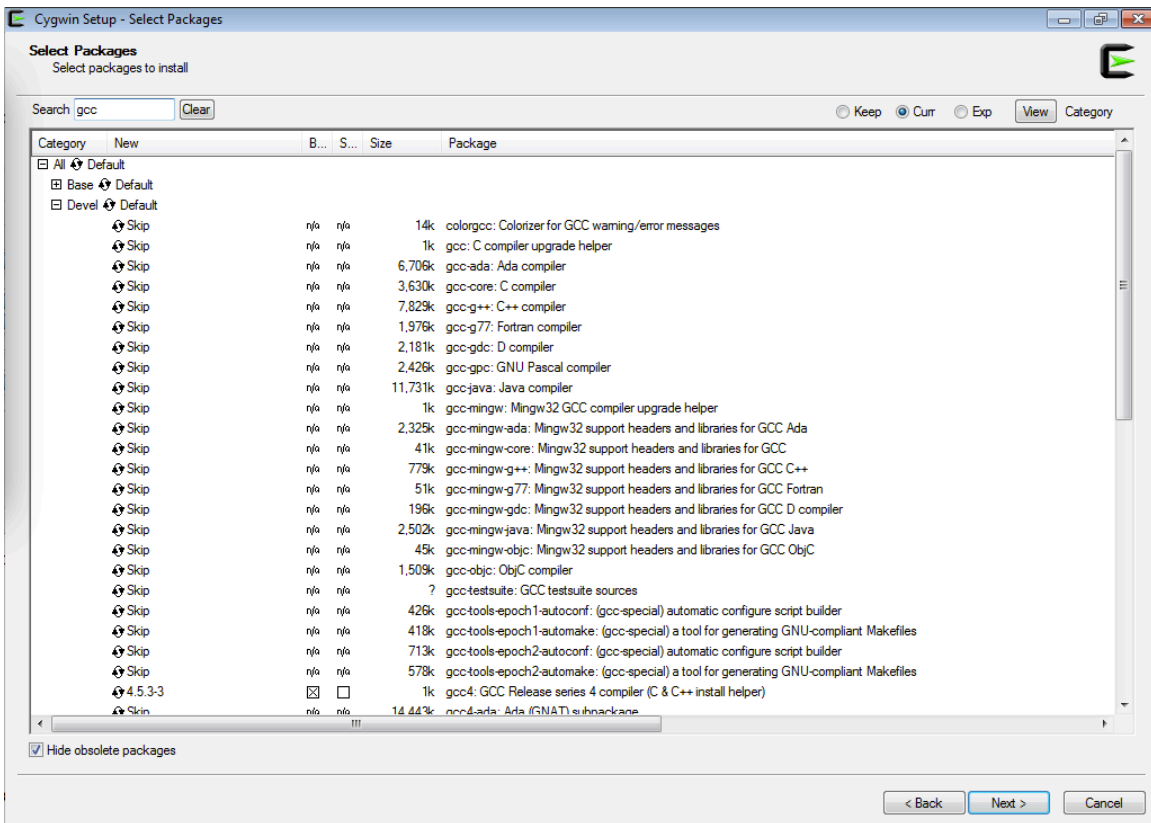
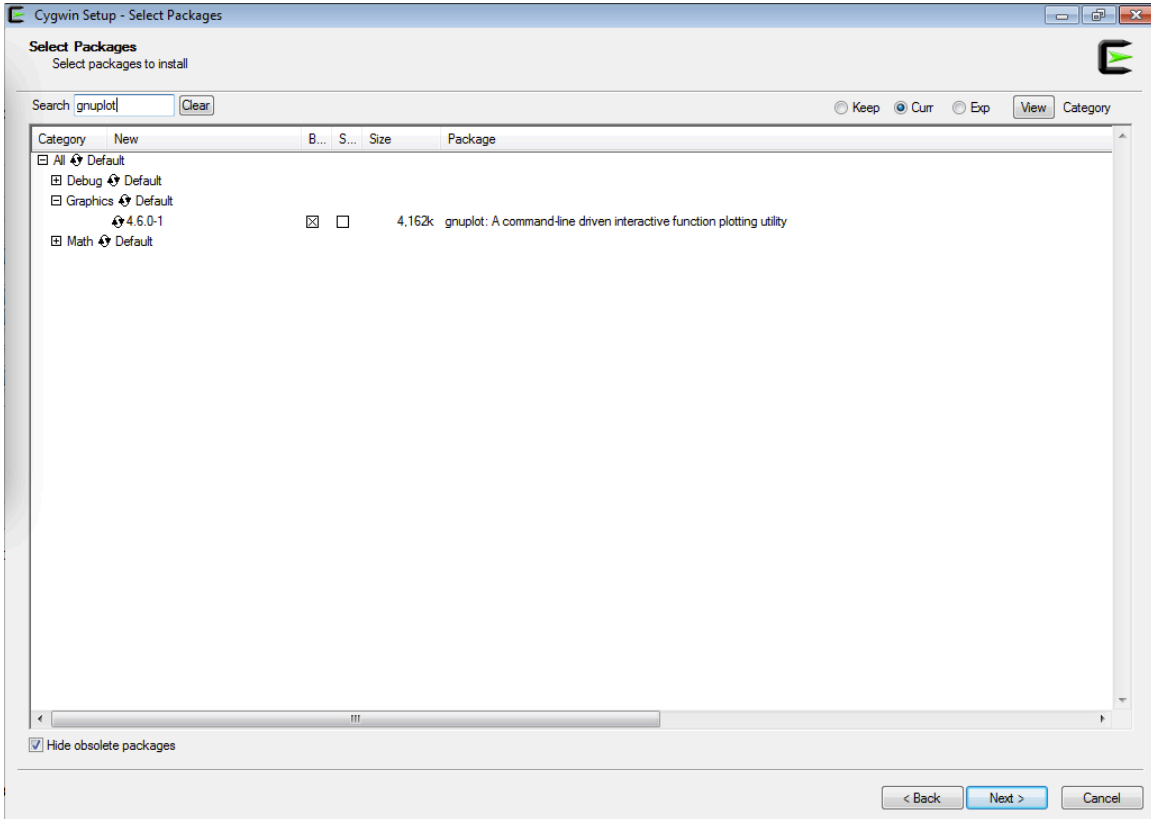
If you click on the version number for a package more than once you may revert to an older version. If you do this on accident, DON'T PANIC! Just keep clicking until you get back to the newest version (the highest number).

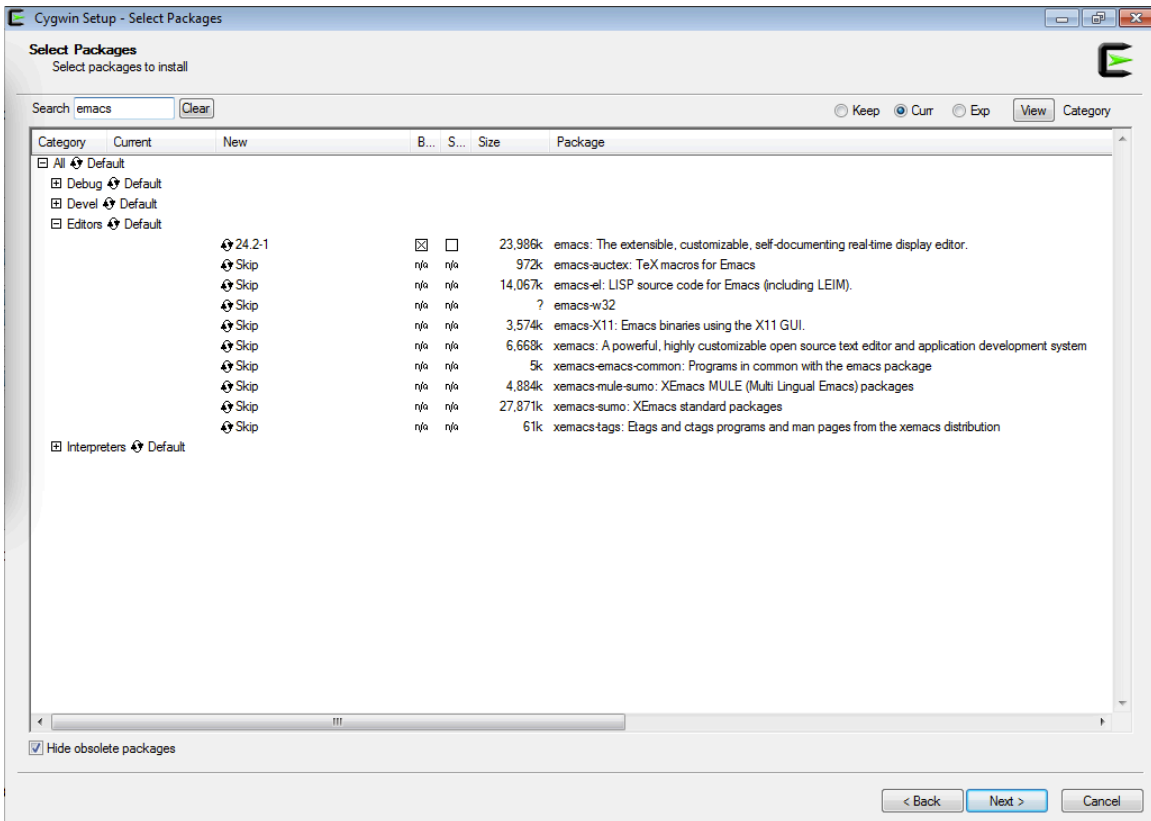
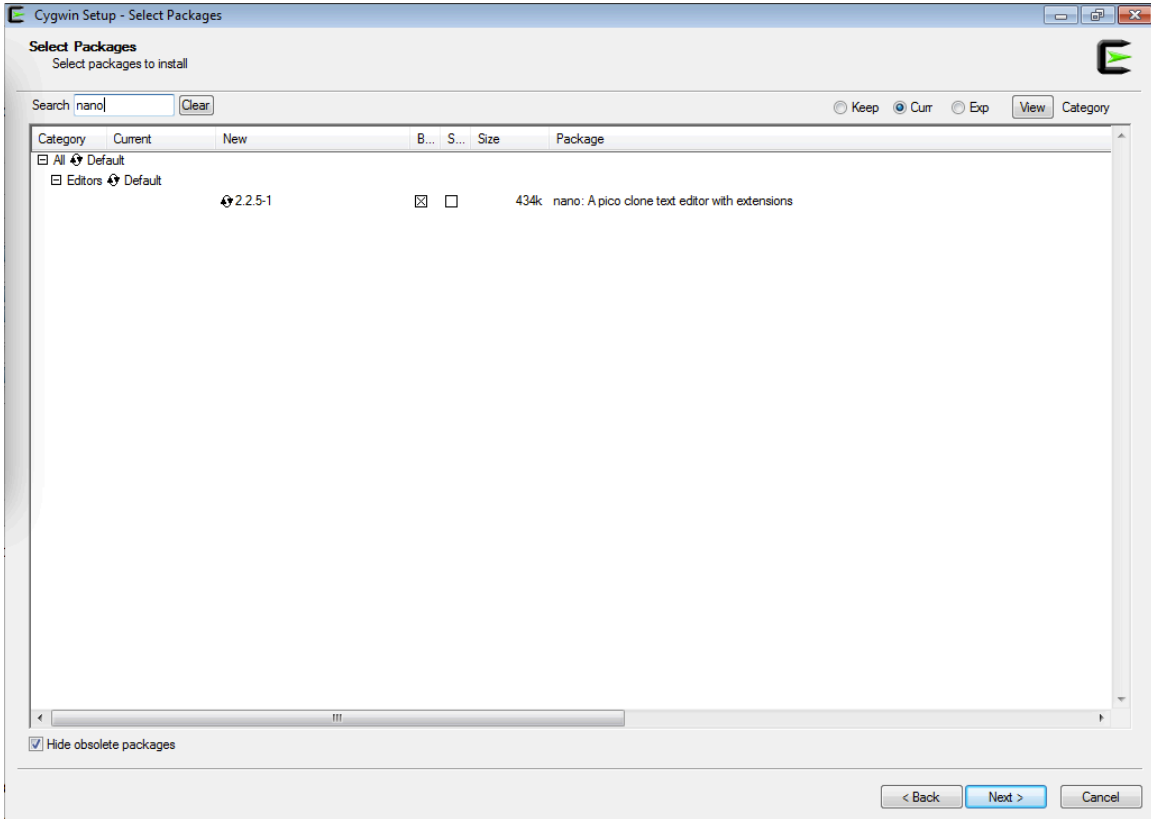


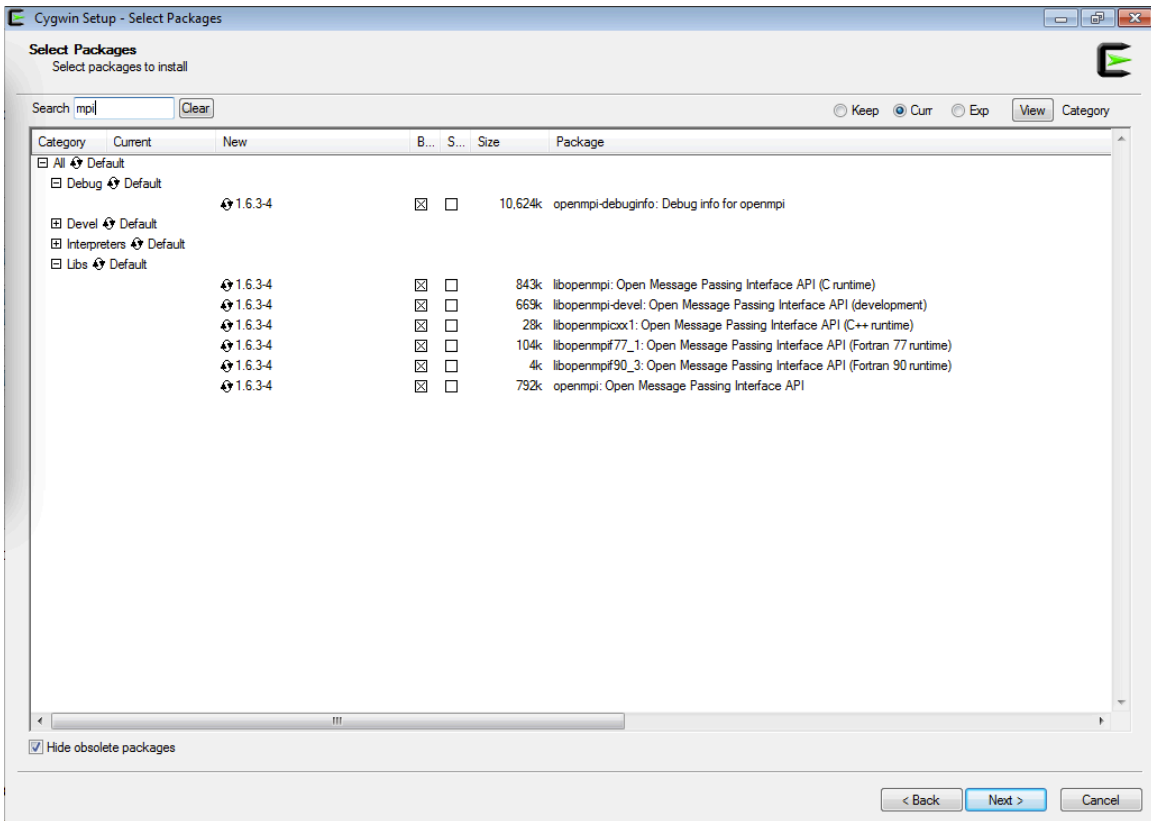
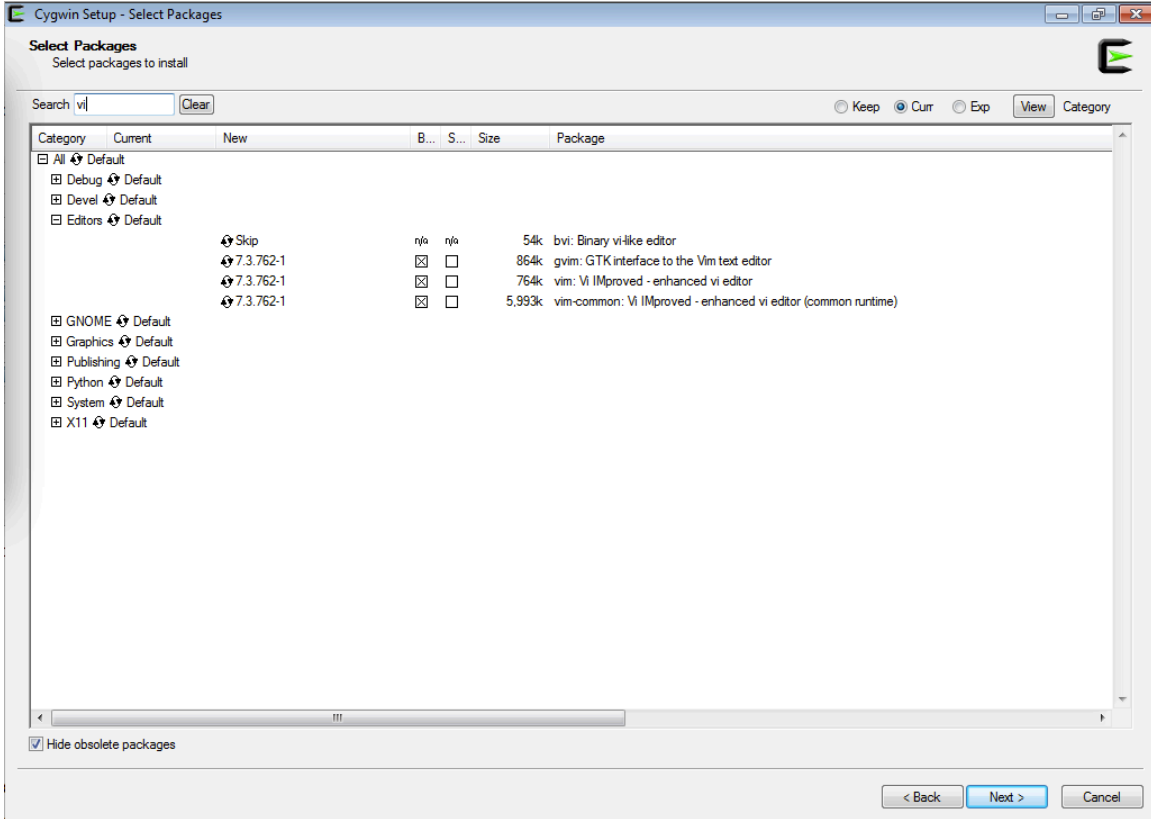


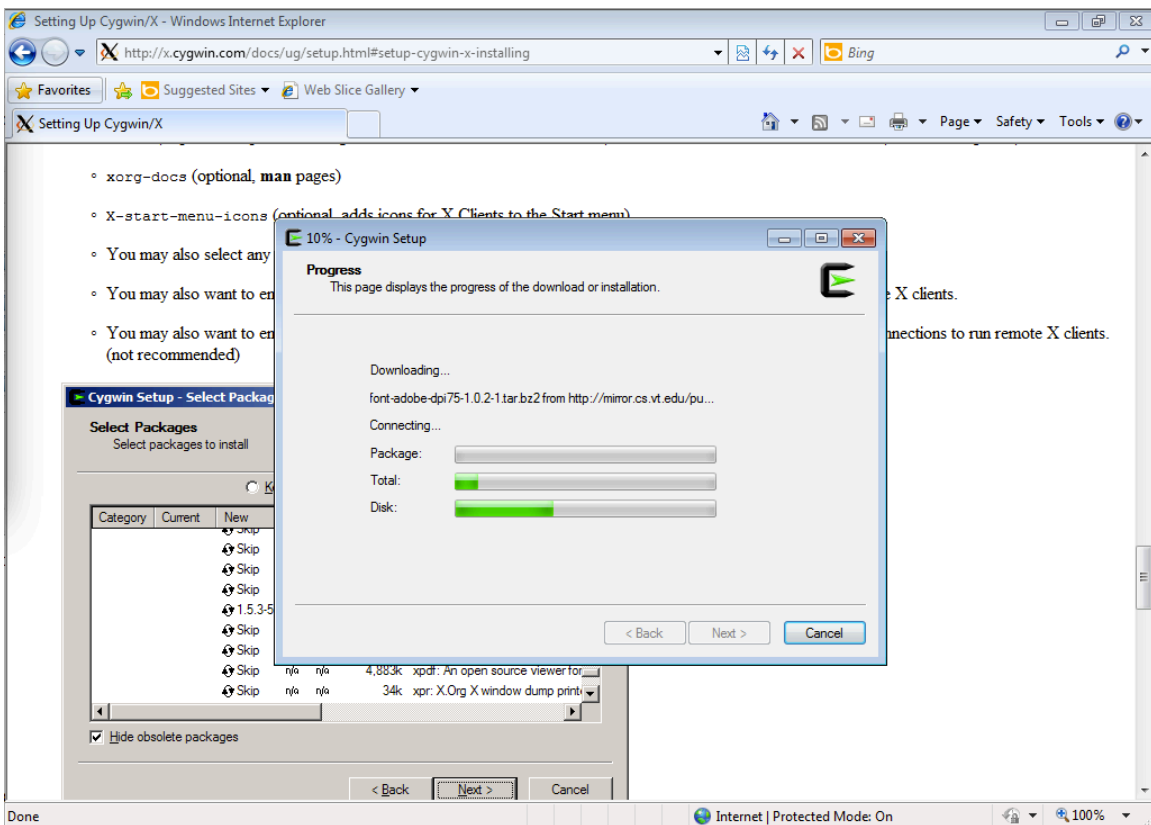
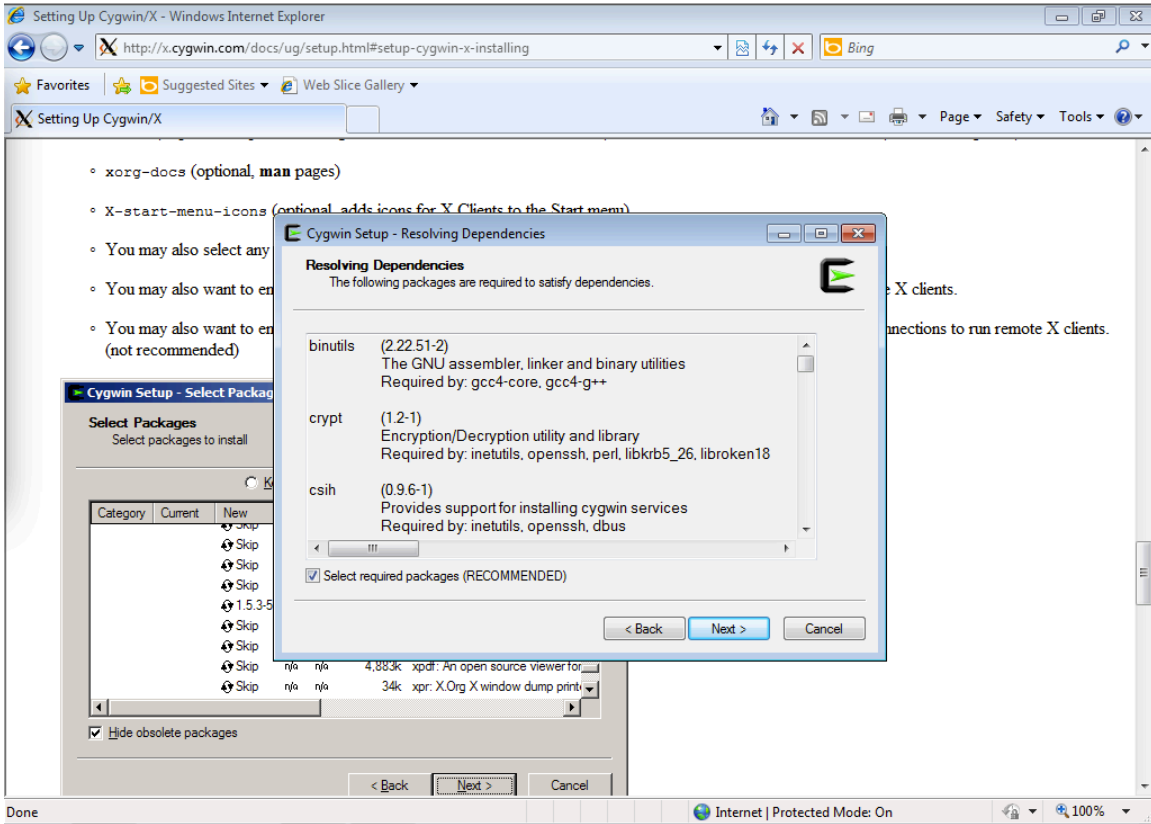


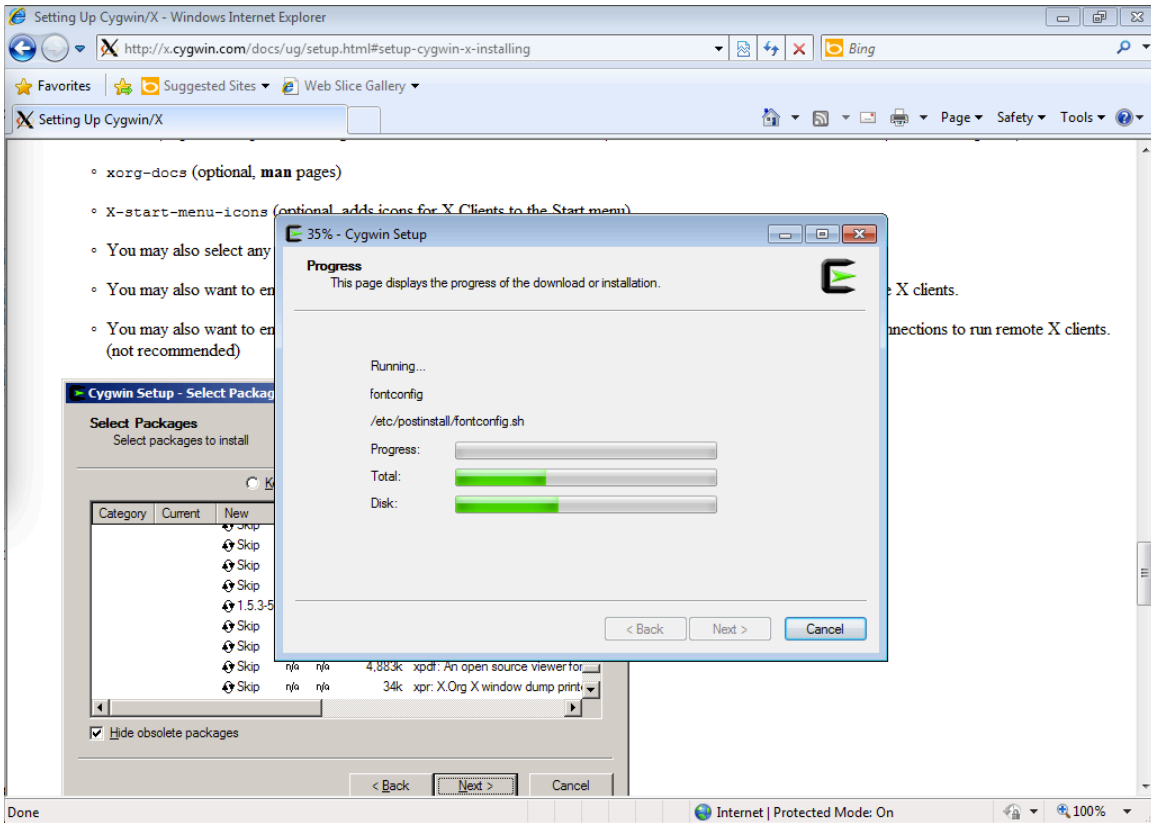
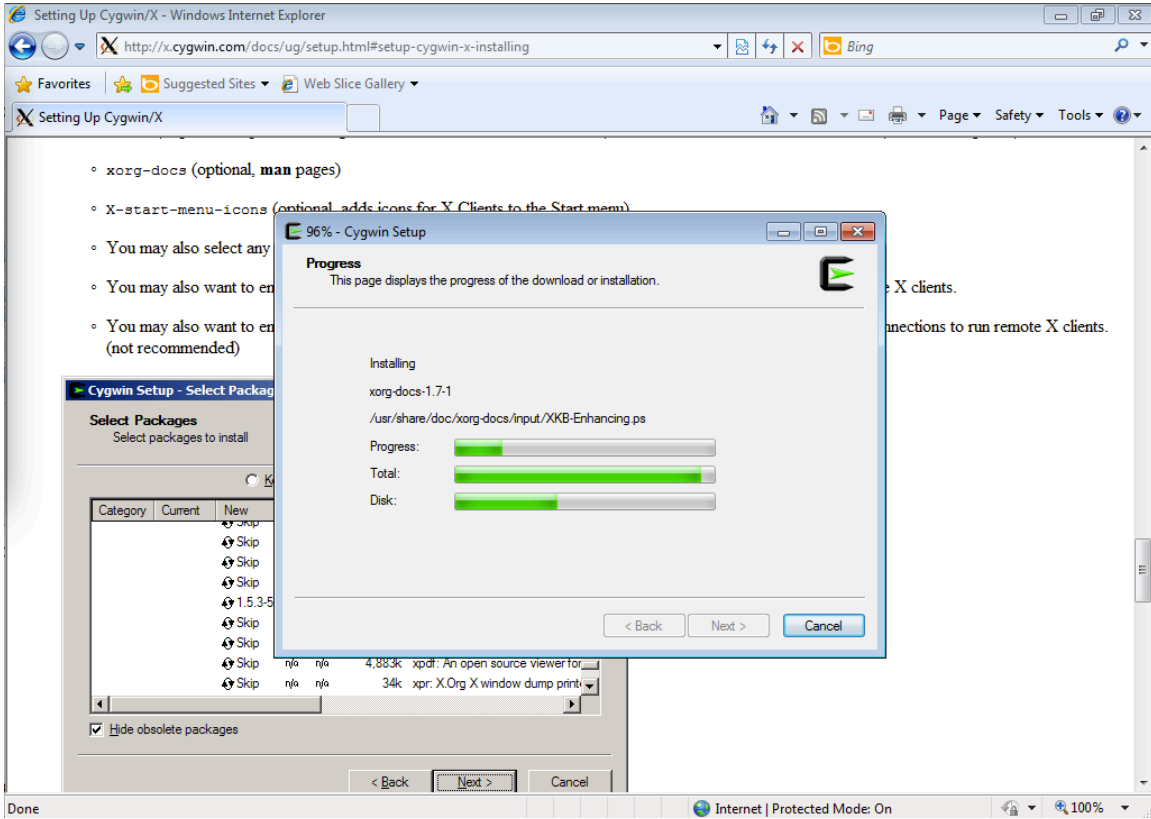


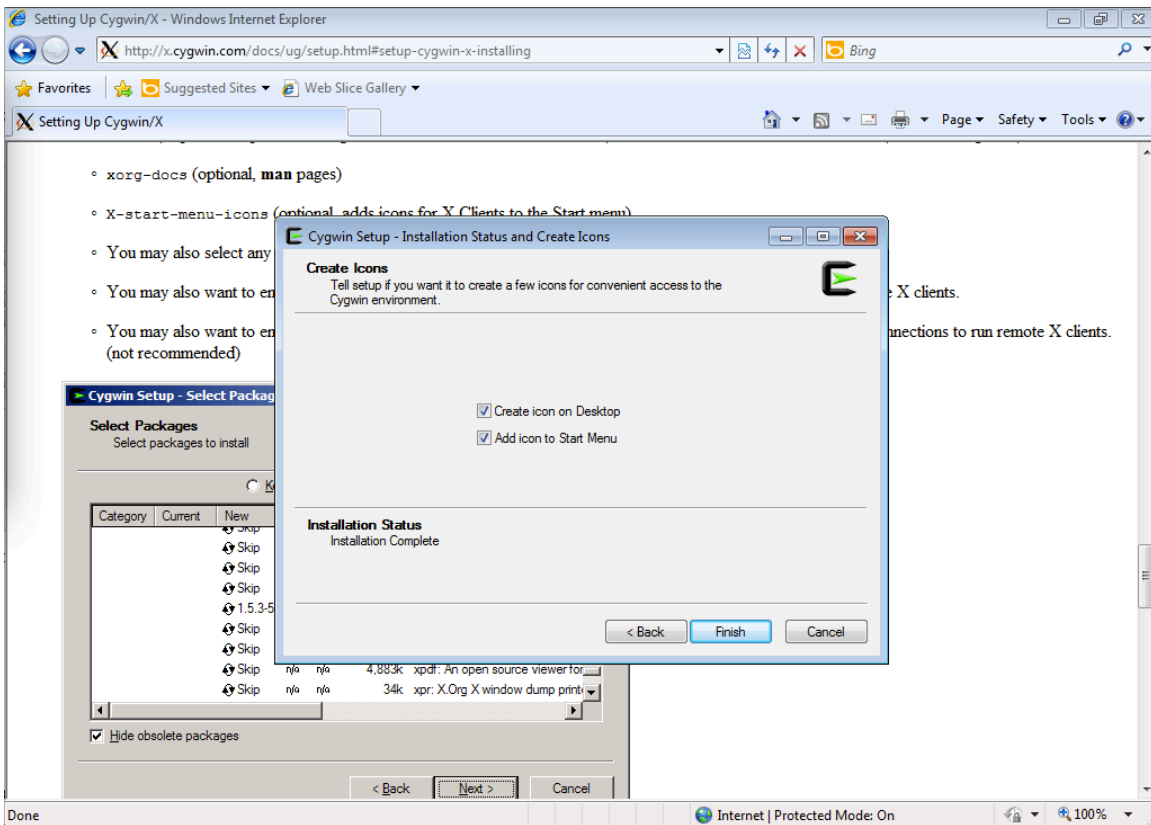
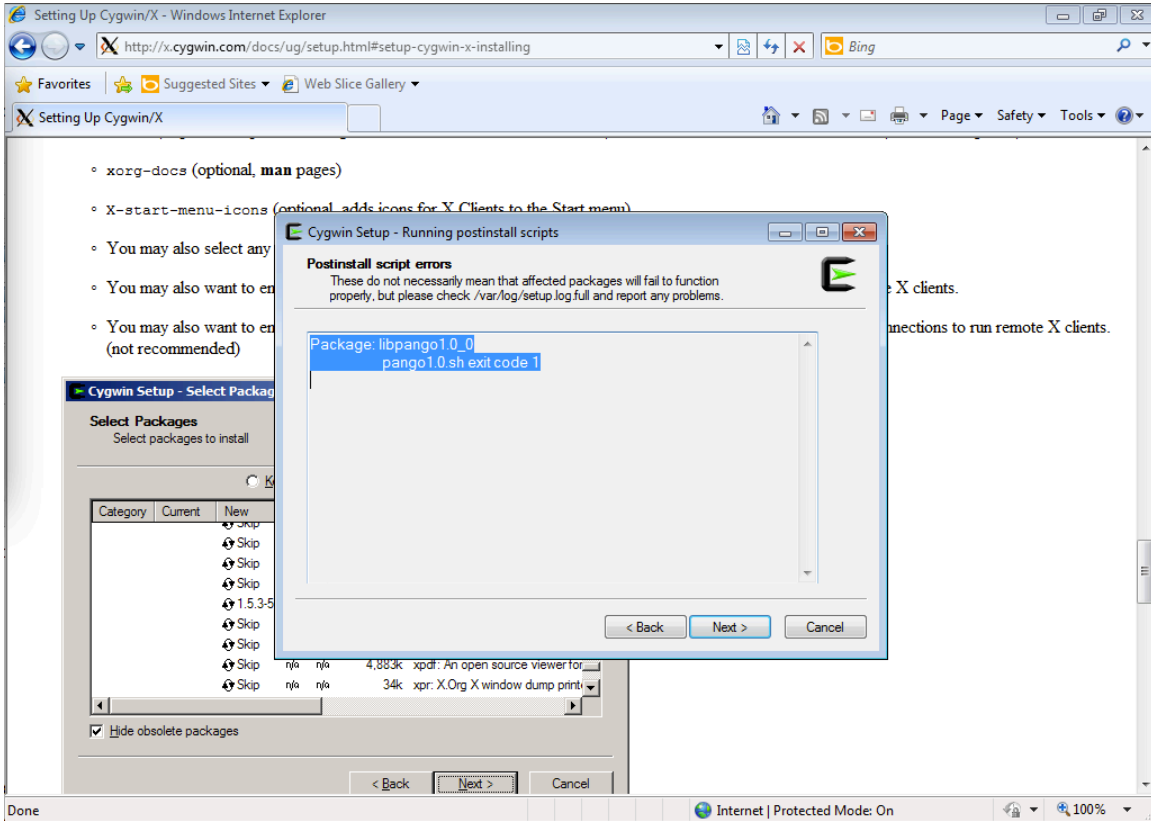












Setting Up Cygwin/X - Windows Internet Explorer

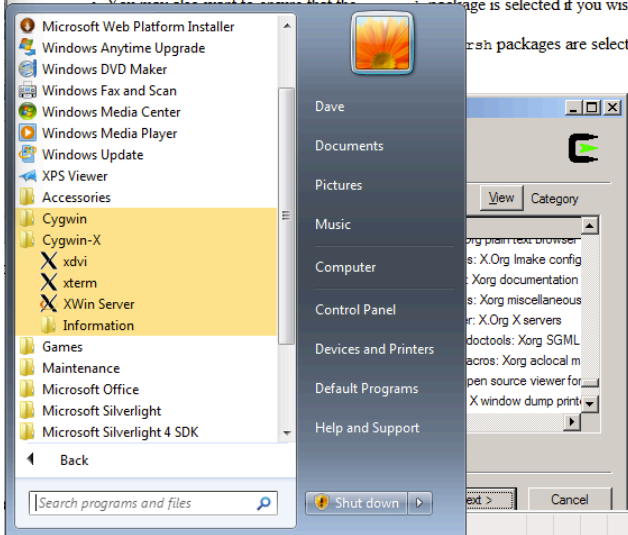
http://x.cygwin.com/docs/ug/setup.html#setup-cygwin-x-installing

Setting Up Cygwin/X

- xorg-docs (optional, **man** pages)
- X-start-menu-icons (optional, adds icons for X Clients to the Start menu)
- You may also select any X client programs you want to use, and any fonts you would like to have available.

You may also want to ensure that the `ssh` package is selected if you wish to use `ssh` connections to run remote X clients.

Refresh packages are selected if you wish to use `telnet` or `rsh` connections to run remote X clients.



The screenshot shows a Windows Start menu search window. The search results list several items under the 'Cygwin-X' category, including 'xvdi', 'xterm', and 'XWin Server'. The 'Cygwin-X' folder is highlighted in yellow. The search bar contains the text 'Search programs and files'.

Setting Up Cygwin/X - Windows Internet Explorer

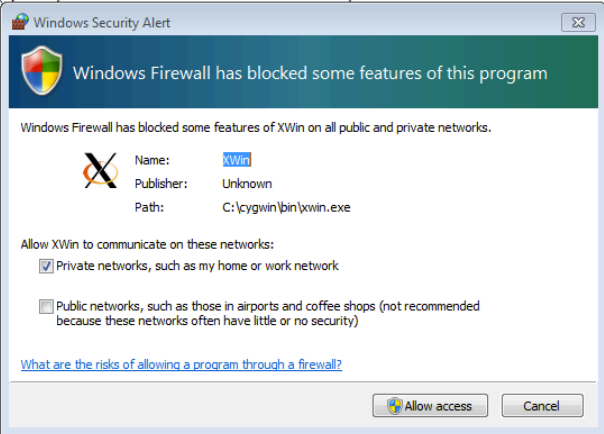
http://x.cygwin.com/docs/ug/setup.html#setup-cygwin-x-installing

Setting Up Cygwin/X

- xorg-docs (optional, **man** pages)
- X-start-menu-icons (optional, adds icons for X Clients to the Start menu)
- You may also select any

You may also want to ensure that the `ssh` package is selected if you wish to use `ssh` connections to run remote X clients.

Refresh packages are selected if you wish to use `telnet` or `rsh` connections to run remote X clients.



The screenshot shows a Windows Firewall Security Alert dialog box. The title bar reads 'Windows Security Alert'. The main text says 'Windows Firewall has blocked some features of this program'. Below this, it lists the program details: Name: XWin, Publisher: Unknown, Path: C:\cygwin\bin\xwin.exe. There are two checkboxes: 'Allow XWin to communicate on these networks:'. The first checkbox is checked and labeled 'Private networks, such as my home or work network'. The second checkbox is unchecked and labeled 'Public networks, such as those in airports and coffee shops (not recommended because these networks often have little or no security)'. At the bottom, there are 'Allow access' and 'Cancel' buttons.

Terminal window showing Octave installation options:

```

Dave@Dave-PC ~
$ octave
GNU Octave, version 3.6.2
Copyright (C) 2012 John W. Eaton and others.
This is free software; see the source code for copying conditions.
There is ABSOLUTELY NO WARRANTY; not even for MERCHANTABILITY or
FITNESS FOR A PARTICULAR PURPOSE. For details, type 'warranty'.

Octave was configured for "i686-pc-cygwin".

Additional information about Octave is available at http://www.octave.org.

Please contribute if you find this software useful.
For more information, visit http://www.octave.org/help-wanted.html

Read http://www.octave.org/bugs.html to learn how to submit bug reports.

For information about changes from previous versions, type 'news'.

octave:1>
  
```

Browser window showing text:

part menu)

fonts you would like to have available.

If you wish to use **ssh** connections to run remote X clients.

are selected if you wish to use **telnet** or **rsh** connections to run remote X clients.

Package selection dialog:

Select packages to install

Category	Current	New	B...	S...	Size	Package
		<input type="checkbox"/>	<input type="checkbox"/>	<input type="checkbox"/>	175k	xorg-cf-files: X.Org Imake config
		<input type="checkbox"/>	<input type="checkbox"/>	<input type="checkbox"/>	5,430k	xorg-docs: Xorg documentation
		<input type="checkbox"/>	<input type="checkbox"/>	<input type="checkbox"/>	8k	xorg-scripts: Xorg miscellaneous
		<input checked="" type="checkbox"/>	<input type="checkbox"/>	<input type="checkbox"/>	3,728k	xorg-server: X.Org X servers
		<input type="checkbox"/>	<input type="checkbox"/>	<input type="checkbox"/>	2k	xorg-sgml-doctools: Xorg SGML
		<input type="checkbox"/>	<input type="checkbox"/>	<input type="checkbox"/>	11k	xorg-util-macros: Xorg allocal m
		<input type="checkbox"/>	<input type="checkbox"/>	<input type="checkbox"/>	4,883k	xpdf: An open source viewer for
		<input type="checkbox"/>	<input type="checkbox"/>	<input type="checkbox"/>	34k	xpr: X.Org X window dump print

Buttons: < Back, Next >, Cancel

Terminal window showing Octave plot command:

```

octave:1> plot( [ 1, 2, 3, 4, 5, 6, 7, 8, 9, 10 ] );
octave:2>
  
```

Figure 1 window showing a plot:

Figure 1

0,699708, 10,1624

Setting Up Cygwin/X - Windows Internet Explorer

http://x.cygwin.com/docs/ug/setup.html#setup-cygwin-x-installing

Setting Up Cygwin/X

Cygwin/X p... ~

Main Options VT Options VT Fonts

```

Dave@Dave-PC ~
$ nano MyFirstFunction.m
  
```

on the Start Menu to run it), startxdmcp.bat)

to have available.

connections to run remote X clients.

sh to use telnet or rsh connections to run remote X clients.

Category	Current	New	B...	S...	Size	Package
						ok xmore: X.Org plain text browser
					175k	xorg-cf-files: X.Org Imake config
					5,430k	xorg-docs: Xorg documentation
					8k	xorg-scripts: Xorg miscellaneous
					3,728k	xorg-server: X.Org X servers
					2k	xorg-sgml-doctools: Xorg SGML
					11k	xorg-util-macros: Xorg adlocal m
					4,883k	xpdf: An open source viewer for
					34k	xpr: X.Org X window dump print

Done Internet | Protected Mode: On 100%

Setting Up Cygwin/X - Windows Internet Explorer

http://x.cygwin.com/docs/ug/setup.html#setup-cygwin-x-installing

Setting Up Cygwin/X

Cygwin/X p... ~

Main Options VT Options VT Fonts

```

GNU nano 2.2.6 File: MyFirstFunction.m
function MyFirstFunction(x)
plot(x);
  
```

on the Start Menu to run it), startxdmcp.bat)

to have available.

connections to run remote X clients.

sh to use telnet or rsh connections to run remote X clients.

Category	Current	New	B...	S...	Size	Package
						ok xmore: X.Org plain text browser
					175k	xorg-cf-files: X.Org Imake config
					5,430k	xorg-docs: Xorg documentation
					8k	xorg-scripts: Xorg miscellaneous
					3,728k	xorg-server: X.Org X servers
					2k	xorg-sgml-doctools: Xorg SGML
					11k	xorg-util-macros: Xorg adlocal m
					4,883k	xpdf: An open source viewer for
					34k	xpr: X.Org X window dump print

Done Internet | Protected Mode: On 100%

Setting Up Cygwin/X - Windows Internet Explorer

http://x.cygwin.com/docs/ug/setup.html#setup-cygwin-x-installing

Setting Up Cygwin/X

Cygwin/X p...
Main Options VT Options VT Fonts

```
Dave@Dave-PC ~  
$ nano MyFirstFunction.m  
$ ls  
MyFirstFunction.m  
$ nano MyFirstFunction.m  
$
```

on the Start Menu to run it), **startxdmcp.bat**)

to have available.

connections to run remote X clients.

sh to use **telnet** or **rsh** connections to run remote X clients.

Category	Current	New	B...	S...	Size	Package
	Skip	n/a	n/a		0k	xmore: X.org plain text browser
	Skip	n/a	n/a		175k	xorg-cf-files: X.Org Imake config
	Skip	n/a	n/a		5,430k	xorg-docs: Xorg documentation
	Skip	n/a	n/a		8k	xorg-scripts: Xorg miscellaneous
	1.5.3-5	<input checked="" type="checkbox"/>	<input type="checkbox"/>		3,728k	xorg-server: X.Org X servers
	Skip	n/a	n/a		2k	xorg-sgml-doctools: Xorg SGML
	Skip	n/a	n/a		11k	xorg-util-macros: Xorg adlocal m
	Skip	n/a	n/a		4,883k	xpdf: An open source viewer for
	Skip	n/a	n/a		34k	xpr: X.Org X window dump print

Done Internet | Protected Mode: On 100%

Setting Up Cygwin/X - Windows Internet Explorer

http://x.cygwin.com/docs/ug/setup.html#setup-cygwin-x-installing

Setting Up Cygwin/X

Cygwin/X p...
Main Options VT Options VT Fonts

```
Dave@Dave-PC ~  
$ nano MyFirstFunction.m  
$ ls  
MyFirstFunction.m  
$ nano MyFirstFunction.m  
$
```

on the Start Menu to run it), **startxdmcp.bat**)

to have available.

connections to run remote X clients.

sh to use **telnet** or **rsh** connections to run remote X clients.

Category	Current	New	B...	S...	Size	Package
	Skip	n/a	n/a		0k	xmore: X.org plain text browser
	Skip	n/a	n/a		175k	xorg-cf-files: X.Org Imake config
	Skip	n/a	n/a		5,430k	xorg-docs: Xorg documentation
	Skip	n/a	n/a		8k	xorg-scripts: Xorg miscellaneous
	1.5.3-5	<input checked="" type="checkbox"/>	<input type="checkbox"/>		3,728k	xorg-server: X.Org X servers
	Skip	n/a	n/a		2k	xorg-sgml-doctools: Xorg SGML
	Skip	n/a	n/a		11k	xorg-util-macros: Xorg adlocal m
	Skip	n/a	n/a		4,883k	xpdf: An open source viewer for
	Skip	n/a	n/a		34k	xpr: X.Org X window dump print

Done Internet | Protected Mode: On 100%

Setting Up Cygwin/X - Windows Internet Explorer

http://x.cygwin.com/docs/ug/setup.html#setup-cygwin-x-installing

Setting Up Cygwin/X

Cygwin/X p

xorg: Main Options VT Options VT Fonts
 xini: Dave@Dave-PC ~
 \$ nano MyFirstFunction.m
 xorg: Dave@Dave-PC ~
 \$ octave
 X-st: GNU Octave, version 3.6.2
 Copyright (C) 2012 John W. Eaton and others.
 This is free software; see the source code for copying conditions.
 There is ABSOLUTELY NO WARRANTY; not even for MERCHANTABILITY or
 FITNESS FOR A PARTICULAR PURPOSE. For details, type `warranty'.
 You: Octave was configured for "i686-pc-cygwin".
 You: Additional information about Octave is available at <http://www.octave.org>.
 Please contribute if you find this software useful.
 For more information, visit <http://www.octave.org/help-wanted.html>
 Read <http://www.octave.org/bugs.html> to learn how to submit bug reports.
 For information about changes from previous versions, type `news'.
 octave:1>

Category	Current	New	B...	S...	Size	Package
						xorg-x11: X.Org print text browser
					175k	xorg-cf-files: X.Org imake config
					5.430k	xorg-docs: Xorg documentation
					8k	xorg-scripts: Xorg miscellaneous
					3.728k	xorg-server: X.Org X servers
					2k	xorg-sgml-doctools: Xorg SGML
					11k	xorg-util-macros: Xorg adocal m
					4.883k	xpdf: An open source viewer for
					34k	xpr: X.Org X window dump print

Done Internet | Protected Mode: On 100%

Setting Up Cygwin/X - Windows Internet Explorer

http://x.cygwin.com/docs/ug/setup.html#setup-cygwin-x-installing

Setting Up Cygwin/X

Cygwin/X p

xorg: Main Options VT Options VT Fonts
 xini: Dave@Dave-PC ~
 \$ nano MyFirstFunction.m
 xorg: Dave@Dave-PC ~
 \$ octave
 X-st: GNU Octave, version 3.6.2
 Copyright (C) 2012 John W. Eaton and others.
 This is free software; see the source code for copying conditions.
 There is ABSOLUTELY NO WARRANTY; not even for MERCHANTABILITY or
 FITNESS FOR A PARTICULAR PURPOSE. For details, type `warranty'.
 You: Octave was configured for "i686-pc-cygwin".
 You: Additional information about Octave is available at <http://www.octave.org>.
 Please contribute if you find this software useful.
 For more information, visit <http://www.octave.org/help-wanted.html>
 Read <http://www.octave.org/bugs.html> to learn how to submit bug reports.
 For information about changes from previous versions, type `news'.
 octave:1> y = [1 2 3 4 5 6 7 8 9 10];
 octave:2> MyFirstFunction(y)
 octave:3>

Category	Current	New	B...	S...	Size	Package
						xorg-x11: X.Org print text browser
					175k	xorg-cf-files: X.Org imake config
					5.430k	xorg-docs: Xorg documentation
					8k	xorg-scripts: Xorg miscellaneous
					3.728k	xorg-server: X.Org X servers
					2k	xorg-sgml-doctools: Xorg SGML
					11k	xorg-util-macros: Xorg adocal m
					4.883k	xpdf: An open source viewer for
					34k	xpr: X.Org X window dump print

Done Internet | Protected Mode: On 100%

1,84204, 9,92813

